The Fujitsu logo, featuring the word "FUJITSU" in a white, serif font with a stylized infinity symbol above the letter 'J'.

FUJITSU

NEW ZEALAND'S FAVOURITE AIR®

HEAT PUMP CATALOGUE

HEATING /
AIR CONDITIONING
SOLUTIONS

A photograph of a family of four (a man, a woman, and two children) sitting on a sofa in a living room, smiling and laughing together. The scene is warm and intimate, with soft lighting. A large red vertical bar is on the left side of the image, and a red horizontal bar is at the bottom.

COME HOME TO FUJITSU COMFORT
6 YEAR PARTS & LABOUR WARRANTY
WHEN YOU USE A FUJITSU ACCREDITED INSTALLER

WHY CHOOSE FUJITSU?

NEW ZEALAND'S FAVOURITE AIR®

Fujitsu General is a leading supplier of Heat Pumps/Air Conditioners in New Zealand with a portfolio to suit both residential and commercial applications.

We focus all of our research and manufacturing strengths into Heat Pumps/Air Conditioners which has resulted in the extensive range of world-class, energy efficient, market-leading systems.

Fujitsu General strives to consistently provide high quality, reliable products accompanied by superior customer service. To be 'New Zealand's Favourite Air®' means to be the best heating/air conditioning company to deal with in New Zealand, not just a leading heating/air conditioning brand.

That's why we're proud to say we are 'New Zealand's Favourite Air®'.

PEACE OF MIND

Fujitsu's accreditation programme for installers helps ensure that you'll get the right fit for your unique space. A professional installation is essential for the efficient performance of any Heat Pump/Air Conditioner.

6 YEAR MANUFACTURER'S WARRANTY

Fujitsu believe in the quality and reliability of every Heat Pump/Air Conditioner we sell. When you use a Fujitsu accredited installer, you'll get a full 6-year parts and labour warranty – for the reassurance you need that we stand behind our product for the long term.

NEW ZEALAND'S MOST TRUSTED HEAT PUMP BRAND

We are proud to have been voted the most trusted Heat Pump brand in the 2020 Reader's Digest Trusted Brands Survey.



STATE OF THE ART RESEARCH AND DEVELOPMENT

Our state of the art research and development centre, located at our headquarters in Japan, is equipped with numerous testing facilities simulating a variety of heating and cooling operating conditions.

PERFORMANCE TESTING UNDERTAKEN INCLUDES:

- Evaluating the units heating and cooling capacity under varied temperature and humidity conditions
- Testing the units air volume and air flow distance
- Measuring the units operating noise
- Evaluating the units durability to withstand outdoor weather extremes.

This rigorous testing is aimed at meeting Fujitsu's high standard of product quality and reliability.

AIR FILTERS

Fujitsu's advanced filter systems contribute to a fresher and cleaner living environment. Fujitsu's Apple-Catchin filters are approved by the Asthma and Respiratory Foundation NZ's Sensitive Choice® Programme.



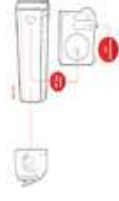
COBALT BLUE PROTECTION

The Fujitsu outside unit heat exchanger fins are specially coated with Cobalt Blue - to help protect against corrosion and enhance the durability as well as extend the performance life of your Fujitsu Heat Pump/Air Conditioner.



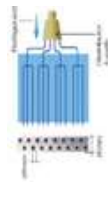
DC INVERTER TECHNOLOGY

High energy efficiencies are achieved with Fujitsu's twin rotary DC compressor, DC inverter control and DC fan motor technology.



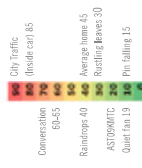
HIGH EFFICIENCY HEAT EXCHANGER

High density multi-path heat exchanger. Heat exchange performance is substantially improved by thin and high density heat exchanger and multi-path efficiency technology.



JUST QUIETLY

Using the latest fan technology plus 'quiet mode' means Fujitsu Heat Pumps/Air Conditioners are very quiet. Compare our decibel noise levels on the chart adjacent.



FUJITSU

NEW ZEALAND'S FAVOURITE AIR®

FEATURES

NOTE: NOT ALL FEATURES AVAILABLE ON ALL MODELS, PLEASE REFER TO FEATURES CHECKLISTS.

COMFORT FUNCTIONS



AUTOMATIC AIR FLOW ADJUSTMENT
When auto mode is selected for the fan, the micro-processor adjusts the airflow to follow changes in room temperature.



AUTO RESTART
Should there be temporary loss of power, the unit will automatically restart itself in the same operating mode, once the power is restored.



AUTO-CHANGEOVER
The unit automatically switches between heating and cooling modes based on the temperature setting and room temperature.



AUTOMATIC LOUVRE
The position of the louvres is set automatically to match the operating mode. It is also possible to adjust the louvres using the remote control.



DOUBLE SWING AUTOMATIC
Complex swing action of the louvres enables them to swing automatically in both horizontal and vertical directions.



RIGHT / LEFT SWING LOUVRE
The right / left louvre automatically swings in either direction.



UP / DOWN SWING LOUVRE
The up / down louvre automatically swings up and down.



AUTO SHUT LOUVRE
The auto shut louvres close or open automatically when the unit stops or starts.



10°C HEAT OPERATION
The room temperature can be set to go no lower than 10°C, ensuring that the room does not get too cold when not occupied.

CONVENIENCE FUNCTIONS



WEEKLY TIMER
Different ON-OFF times can be set for up to 7 days.



WEEKLY + SETBACK TIMER
Weekly + Setback timer can set temperature for two time spans and for each day of the week.



PROGRAM TIMERS
This timer allows selection of one of four options: ON, OFF, ON -> OFF, or OFF -> ON.



ON-OFF TIMER
ON-OFF timer can be set to operate once every 24 hours.



SLEEP TIMER
The micro-processor gradually changes the room temperature, allowing you to sleep comfortably at night.



SUPER QUIET MODE
The indoor units fan can operate at a low speed to produce quieter operation.



FILTER SIGN
Select appropriate intervals for displaying the filter sign on the indoor unit according to the estimated amount of dust in the air of the room.

ENERGY SAVING FEATURES



ECONOMY MODE
The economy operation will save energy in heating, cooling and dry mode. Economy operation is set by pressing the button on the remote control.



HUMAN SENSOR
The sensor detects the movement of people in the room. The unit can be set into either an auto saving or auto off mode to help save energy.

CLEAN FUNCTIONS



WASHABLE PANEL
Dust which accumulates on the Heat Pump/Air Conditioner can be easily cleaned with a damp cloth.



APPLE-CATECHIN FILTER
Fine dust, invisible mould spores and harmful microorganisms are absorbed onto the filter by static electricity and further growth is inhibited and deactivated by the polyphenol ingredient extracted from apples.



LONG-LIFE ION DEODORISATION FILTER
The filter deodorises by powerfully decomposing absorbed odours using the oxidising and reducing effects of ion generated by the ultra-fine-particle ceramic.

anywAIR[®] technology



Control your Fujitsu Heat Pump anytime, anywhere by smartphone and tablet



AC control
Switch unit on or off



Mode
Easily switch between cooling and heating



Setpoint 1[™]
Adjust temperature set point



Room ambient 1[™]
Monitor your room's temperature



Fan speed
Adjust the fan speed remotely

Easily operate your Fujitsu Heat Pump/Air Conditioning unit anywhere by smartphone and tablet. The anywAIR[®] technology Wi-Fi device allows you to remotely control your Heat Pump/Air Conditioner using the free and easy to use myanywAIR App. The device is compatible with a range of Fujitsu Heat Pump/Air Conditioner units* up to 10 years old with an infrared receiver. To find out more, please visit myanywair.com.

*For unit compatibility visit myanywair.com. Apple, the Apple logo, iPhone and Siri are trademarks of Apple Inc., registered in the U.S. and other countries. App Store is a service mark of Apple Inc. ©2019 Google LLC. All rights reserved. Google Play and the Google Play logo are trademarks of Google LLC. Other trademarks and trade names are acknowledged to be the copyright of their respective holders.

FUJITSU

NEW ZEALAND'S FAVOURITE AIR[®]



LIFESTYLE HI-WALL RANGE

WHY CHOOSE OUR LIFESTYLE RANGE?

The Lifestyle Range has stylish designs to blend in seamlessly with the decor of your home or workplace.

EASE OF USE

All models across the Lifestyle Range are accompanied by a simple and easy to use controller, giving you control over the indoor comfort of your home/workplace, right at your fingertips. With features such as low noise mode, economy operation and program timers, you can tailor your comfort needs at the touch of a button.

ENERGY EFFICIENCY

The Lifestyle Range is amongst the most energy efficient Heat Pump/Air Conditioner range Fujitsu has designed. With built-in features such as high efficiency DC compressor, Power Diffusers, and High Density Multi-Path Heat Exchangers, these Heat Pump/Air Conditioners use less power than ever before.

With some models reaching a 5 star energy rating, year round comfort can be more affordable for you and your family.



HUMAN SENSOR CONTROL

All models in the Lifestyle Range contain human sensor control, an intelligent feature which detects movement of people to deliver optimum efficiency and temperature control. When in operation, if the sensor detects no movement in a room after 20 minutes, the Heat Pump/Air Conditioner will automatically switch to energy saving operation, modifying temperature to minimise energy consumption.

When movement is detected within the room, the Heat Pump/Air Conditioner reverts back to its previous setting.



ADVANCED FILTER SYSTEMS

Fujitsu's advanced filter systems contribute to a fresher and cleaner living environment. Apple Catechin filters are approved by the Asthma & Respiratory Foundation NZ's Sensitive Choice® Programme.



FUJITSU

NEW ZEALAND'S FAVOURITE AIR®

LIFESTYLE HI-WALL RANGE KMTC

INDOOR UNITS



ASTG09/12KMTC



ASTG18/22/24KMTC



ASTG30/34KMTC



Standard Controller

OUTDOOR UNITS



AOTG09/12KMTC



AOTG18/22/24KMTC



AOTG30KMTC



AOTG34KMTC

AVAILABLE OPTIONAL CONTROLLERS



Wired Touch Controller*



Simple Wired Controller*



anyWi-Fi®
Wi-Fi device.
See page 5 for
more details.

*Optional Communication Kit required for connection.

FEATURES CHECKLIST

FEATURES	SET-ASTG09/12KMTC	SET-ASTG18/22/24KMTC	SET-ASTG30/34KMTC
COMFORT FUNCTIONS			
Up / Down swing louvre	✓	✓	✓
Right / Left swing louvre		✓	✓
Automatic louvre	✓		✓
Auto shut louvre	✓	✓	✓
Double auto swing louvres		✓	✓
Automatic air flow adjustment	✓		✓
Auto restart	✓	✓	✓
Auto-changeover	✓	✓	✓
10°C HEAT operation	✓	✓	✓
Powerful mode	✓	✓	✓
CONVENIENCE FUNCTIONS			
Low noise mode	✓	✓	✓
Sleep timer	✓	✓	✓
Program timer	✓	✓	✓
Weekly timer	✓	✓	✓
Weekly + setback timer	0	0	0
On-off timer	✓	✓	✓
Filter sign	✓	✓	✓
ENERGY EFFICIENT FUNCTIONS			
Human sensor	✓	✓	✓
Economy mode	✓	✓	✓
CLEAN FUNCTIONS			
Long-life ion deodorisation filter	✓	✓	✓
Apple-catechin filter	✓	✓	✓
Washable panel	✓	✓	✓

0 Optional feature when using a wired controller and communication kit (excludes Simple Wired Controller)
For Product Specifications refer to pages 24 – 25

FUJITSU

NEW ZEALAND'S FAVOURITE AIR®



DESIGNER HI-WALL RANGE

WHY CHOOSE OUR DESIGNER RANGE?

The Designer Range is a very compact & elegant design at just 185mm deep. It combines a sleek, modern finish with efficient, intelligent features and blends seamlessly with any home's interior.

EASE OF USE

The Designer Range comes with a slim and easy to use controller, giving you control of your climate right at your fingertips. With features such as low noise mode, economy operation and weekly program timers, tailoring your comfort needs has never been so easy.

ENERGY EFFICIENCY

The Designer Range is one of the most efficient heat pump/air conditioners Fujitsu have designed. With built-in features such as high efficiency DC componentry, high density multi-path heat exchangers and programmable weekly timers, this heat pump/air conditioner uses less power than ever before.



HUMAN SENSOR CONTROL

All models in the Designer Range contain human sensor control, an intelligent feature which detects movement of people to deliver optimum efficiency and temperature control. When in operation, if the sensor detects no movement in a room after 20 minutes, the Heat Pump/Air Conditioner will automatically switch to energy saving operation, modifying temperature to minimise energy consumption.

When movement is detected within the room, the Heat Pump/Air Conditioner reverts back to its previous setting.



ADVANCED FILTER SYSTEMS

Fujitsu's advanced filter systems contribute to a fresher and cleaner living environment. Apple Catechin filters are approved by the Asthma & Respiratory Foundation NZ's Sensitive Choice® Programme.



FUJITSU

NEW ZEALAND'S FAVOURITE AIR®

DESIGNER HI-WALL RANGE KUCA

INDOOR UNITS



ASTG09/12/18KUCA



Standard Controller

OUTDOOR UNITS



AOTG09/12KUCA



AOTG18KUCA

AVAILABLE OPTIONAL CONTROLLERS



Backlit Wired Remote Controller*



Wired Remote Controller*



Simple Wired Controller



appWAVE®
Wi-Fi device.
See page 5 for
more details.

*Optional Communication Kit required for connection.

FEATURES CHECKLIST

FEATURES	SET-ASTG09KUCA	SET-ASTG12KUCA	SET-ASTG18KUCA
COMFORT FUNCTIONS			
Up / Down swing louvre	✓	✓	✓
Automatic louvre	✓	✓	✓
Auto shut louvre	✓	✓	✓
Double auto swing louvres			
Automatic air flow adjustment	✓	✓	✓
Auto restart	✓	✓	✓
Air-changeover	✓	✓	✓
10°C HEAT operation	✓	✓	✓
Powerful mode	✓	✓	✓
CONVENIENCE FUNCTIONS			
Low noise mode	✓	✓	✓
Sleep timer	✓	✓	✓
Program timer	✓	✓	✓
Weekly timer	✓	✓	✓
One-off timer	✓	✓	✓
Filter sign	✓	✓	✓
ENERGY EFFICIENT FUNCTIONS			
Human sensor	✓	✓	✓
Economy mode	✓	✓	✓
CLEAN FUNCTIONS			
Long-life ion deodorisation filter	✓	✓	✓
Apple-catchin filter	✓	✓	✓
Washable panel	✓	✓	✓

For Product Specifications refer to page 26

CLASSIC HI-WALL RANGE

WHY CHOOSE OUR CLASSIC RANGE?

The Classic Range has a number of models available in varying capacities, making it suitable for most rooms in your home/workplace. All models are reverse cycle and contain inverter technology.

CLEAN, FILTERED AIR

The Classic Range's standard filter uses static electricity to clean fine particles and dust in the air such as tobacco smoke and plant pollen that are too small to see. The filter contains catechin, highly effective against bacteria growth, creating a safer, cleaner home for the entire family.

ENERGY EFFICIENT SYSTEMS

The Classic Range has a number of energy efficient features, helping you reduce power usage. With features such as DC rotary compressors, DC Inverter Control, DC fan motor technologies and programs allowing you to tailor your heating/air conditioning needs, year round comfort has never been more affordable.

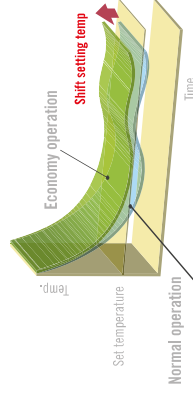


CONTROLLER OPTIONS

The Classic Range has a variety of controller options, giving you control of your climate at your fingertips. With features such as economy operation, sleep mode, and program timers, you can tailor your comfort needs at the touch of a button.

ECONOMY OPERATION

The Classic Range's Economy Operation is an energy saving setting that allows the set temperature of the indoor unit to change by 1°C intervals, limiting the maximum energy usage of the Heat Pump/Air Conditioner.



FUJITSU

NEW ZEALAND'S FAVOURITE AIR®

CLASSIC HI-WALL RANGE

INDOOR UNITS

COMPACT HI-WALL PREMIER



HI-WALL PREMIER LARGE CAPACITY



ASTG09/12/18/22/VCC



HI-WALL PREMIER PLUS

ASTG24/30/34/FCC

ASTG14/LUCB

OUTDOOR UNITS



AOTG09/12/VCC
AOTG14/LUCB



AOTG18/22/VCC
AOTG24/FCC



AOTG30/LFC



AOTG34/LFC

AVAILABLE OPTIONAL CONTROLLERS



Backlit Wired Remote Controller*



Wired Remote Controller**



Simple Wired Controller**



anyWiR®
Wi-Fi device.
See page 5 for more details.

*Optional Communication Kit required for connection to the ASTG09/12/18/22/VCC and ASTG14/LUCB models.

FEATURES CHECKLIST

FEATURES	SET-ASTG09/12/18/22/VCC	SET-ASTG24/30/34/FCC	SET-ASTG14/LUCB
COMFORT FUNCTIONS			
Up/Down swing louvre	✓	✓	✓
Automatic louvre	✓	✓	✓
Auto shut louvre	✓	✓	✓
Double auto swing louvres	✓	✓	✓
Automatic air flow adjustment	✓	✓	✓
Auto restart	✓	✓	✓
Auto-changeover	✓	✓	✓
10°C HEAT operation	✓	✓	✓
Powerful mode	✓	✓	✓
CONVENIENCE FUNCTIONS			
Sleep timer	✓	✓	✓
Program timers	✓	✓	✓
Weekly timers	0	0	✓
On-off timer	✓	✓	✓
Filter sign	✓	✓	✓
ENERGY EFFICIENT FUNCTIONS			
Human sensor	✓	✓	✓
Economy mode	✓	✓	✓
CLEAN FUNCTIONS			
Long-life non-deodorisation filter	✓	✓	✓
Apple-catchin filter	✓	✓	✓
Washable panel	✓	✓	✓

0 The weekly timer is an optional feature when using a wired controller and communication kit where applicable (excludes Simple Wired Controller)

For Product Specifications refer to pages 27 - 29

COMPACT FLOOR CONSOLE

INDOOR UNITS



AGTV09/14LAC

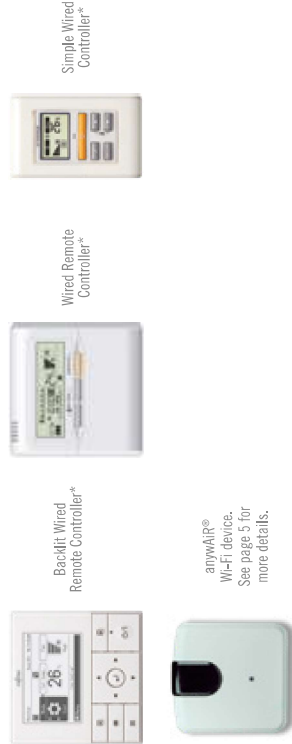
OUTDOOR UNITS



AOTV09LAC

AOTV14LAL

AVAILABLE OPTIONAL CONTROLLERS



Backlit Wired Remote Controller*

Wired Remote Controller*

Simple Wired Controller*

anyWAYIR®
Wi-Fi device.
See page 5 for more details.

WHY CHOOSE OUR COMPACT FLOOR CONSOLES?

Our Compact Floor Consoles deliver very fast heating/cooling.

DUAL FANS

The twin fan operation gives you complete control to heat or cool your room quickly and efficiently, then switch to the top fan only to maintain your temperature quietly and effortlessly.

AIR PURIFYING FILTERS

Fujitsu's advanced filtration system helps absorb fine dust, invisible mould spores and other airborne allergens to help deliver a healthier home environment.

AUTO RESTART

Should there be a temporary loss of power, the unit will automatically restart itself in the same operating mode once power is restored.

FEATURES CHECKLIST

FEATURES	SET-AGTV09LAC	SET-AGTV14LAC
All DC Components	✓	✓
Apple-Catchin Filter	✓	✓
Auto Changer	✓	✓
Auto Restart	✓	✓
Auto Shut Louvre	✓	✓
Automatic Louvre	✓	✓
Blue Fin Heat Exchanger	✓	✓
Coil Dry	✓	✓
Connect Kit	✓	✓
Economy Mode	✓	✓
On-Off Timer	✓	✓
Program Timer	✓	✓
Sleep Timer	✓	✓
Up/Down Swing Louvres	✓	✓
Washable Panel	✓	✓

For Product Specifications refer to page 30



NEW ZEALAND'S FAVOURITE AIR®

DUAL CONSOLE

INDOOR UNITS



ABTG18LVTM/24LVTC



OUTDOOR UNITS



AOTG18LACC



AOTG24LTC

AVAILABLE OPTIONAL CONTROLLERS



Backlit Wired Remote Controller*



Wired Remote Controller*



Simple Wired Controller*



appWIFI®
Wi-Fi device.
See page 5 for more details.

WHY CHOOSE OUR DUAL CONSOLE?

The Dual Console models are designed to be installed on the floor or under the ceiling. An ideal alternative for consumers who don't have wall space available for a traditional wall mounted Heat Pump/Air Conditioner.

AUTO RESTART

Should there be a temporary loss of power, the unit will automatically restart itself in the same operating mode once power is restored.

AUTO CHANGEOVER

The unit automatically switches between operating modes based on the set point temperature and room temperature.

FEATURES CHECKLIST

FEATURES	SET-ABTG18LVTA	SET-ABTG24LVTC
All DC Components	✓	✓
Apple-Catechin Filter	✓	✓
Auto Changeover	✓	✓
Auto Restart	✓	✓
Auto Shut Louvre	✓	✓
Automatic Louvre	✓	✓
Blue Fin Heat Exchanger	✓	✓
Coil Dry	✓	✓
Connect Kit	✓	✓
Economy Mode	✓	✓
On-Off Timer	✓	✓
Program Timer	✓	✓
Sleep Timer	✓	✓
Up / Down Swing Louvres	✓	✓
Double auto swing louvres	✓	✓
Washable Panel	✓	✓

For Product Specifications refer to page 31

FUJITSU

NEW ZEALAND'S FAVOURITE AIR®

COMPACT CEILING CASSETTE

INDOOR UNITS

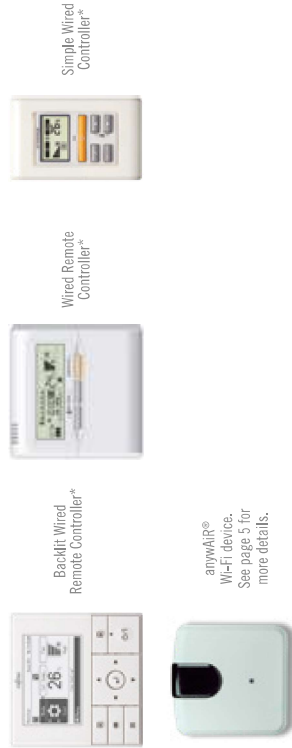


4-WAY FLOW COMPACT
AUTG09/12LVLB
AUTG18VLA
AUTG24VLC

OUTDOOR UNITS



AVAILABLE OPTIONAL CONTROLLERS



anywhere®
Wi-Fi device.
See page 5 for
more details.

WHY CHOOSE OUR COMPACT CEILING CASSETTE?

The cassette heating/cooling unit is visually discreet, with a non-intrusive grille design that sits neatly under the ceiling.

FEATURES CHECKLIST

FEATURES	SET-AUTG09LVLB	SET-AUTG12LVLB	SET-AUTG18VLA	SET-AUTG24VLC
COMFORT FUNCTIONS				
Automatic Louvre	✓	✓	✓	✓
Auto Restart	✓	✓	✓	✓
Auto Changeover	✓	✓	✓	✓
Automatic Fan Speed	✓	✓	✓	✓
10°C HEAT Operation	✓	✓	✓	✓
CONVENIENCE FUNCTIONS				
Low Noise Mode	✓	✓	✓	✓
Super Quiet Mode	✓	✓	✓	✓
Sleep Timer	✓	✓	✓	✓
Fresh Air Intake Kit	*	*	*	*
Program Timer	✓	✓	✓	✓
Weekly Timer	o	o	o	o
On-Off Timer	✓	✓	✓	✓
Filter Sign	✓	✓	✓	✓
ENERGY EFFICIENT FUNCTIONS				
Economy Mode	✓	✓	✓	✓
ALL DC	✓	✓	✓	✓
CLEAN FUNCTIONS				
Removable Intake Grille	✓	✓	✓	✓
Washable Panel	✓	✓	✓	✓
Blue Fin Heat Exchanger	✓	✓	✓	✓

o Optional feature when using a wired controller (excludes Simple Wired Controller)

* Optional part required

For Product Specifications refer to page 32

PRODUCT SPECIFICATIONS

LIFESTYLE HI-WALL RANGE: KMTC

Set Code	Indoor unit		SET-ASTG09KMTC	SET-ASTG12KMTC	SET-ASTG18KMTC	SET-ASTG22KMTC
	Model No.	Outdoor unit	ASTG09KMTC	ASTG12KMTC	ASTG18KMTC	ASTG22KMTC
Power Source	Operation Type		Reverse Cycle		Reverse Cycle	
	V / Ph / Hz		240 / 1 / 50	240 / 1 / 50	240 / 1 / 50	240 / 1 / 50
Capacity	Cooling	KW	2.50 (0.90 - 3.60)	3.50 (0.90 - 4.10)	5.00 (1.00 - 6.50)	6.00 (1.10 - 7.50)
	Heating	KW	3.20 (0.90 - 5.30)	3.70 (0.90 - 6.10)	6.00 (1.05 - 8.70)	7.20 (1.10 - 9.40)
Input Power	Cooling (Max)	KW	0.53 (Max 1.00)	0.89 (Max 1.29)	1.16 (Max 1.68)	1.58 (Max 2.30)
	Heating (Max)	KW	0.66 (Max 1.61)	0.79 (Max 1.89)	1.28 (Max 2.42)	1.70 (Max 2.63)
EER	Cooling	KW / KW	4.71	3.93	4.31	3.80
COP	Heating	KW / KW	4.84	4.68	4.69	4.24
	Cooling		5.0	3.5	4.0	3.0
Star Rating	Heating		5.0	4.5	5.0	4.0
	Cooling		5	3.5	4	3
AEEP	Heating	KW / KW	5	4.5	5	4
	Cooling		3.0 / 3.5	4.2 / 4	5.1 / 5.6	6.8 / 7.4
Running Current	Cooling / Heating	amps				
Moisture Removal	Cooling / Heating	l / hr	0.3	1.0	1.3	2.3
Noise Level	Indoor Sound Pressure (High/Quiet)	dBA	40 / 19	40 / 19	46 / 29	48 / 29
	Outdoor Sound Pressure Cooling / Heating	dBA	40 / 21	42 / 21	46 / 29	48 / 29
Air Circulation (Indoor - High Fan)	Indoor Unit	dBA	46 / 46	49 / 49	47 / 48	48 / 52
	Outdoor Unit		61	64	61	65
Net Dimensions H x W x D	Indoor Unit	I / sec	194 / 197	194 / 214	283 / 283	294 / 294
	Outdoor Unit		270 x 834 x 222	270 x 834 x 222	280 x 980 x 240	280 x 980 x 240
Piping Connections (Liquid / Suction)	Indoor Unit	mm	10	10	12.5	12.5
	Outdoor Unit		542 x 798 x 290	542 x 798 x 290	716 x 820 x 315	716 x 820 x 315
Max Pipe Length (Precharged Length)	Indoor Unit	mm	06.35 / 09.52	06.35 / 09.52	06.35 / 012.70	06.35 / 012.70
	Outdoor Unit	m	20 (15)	20 (15)	30 (15)	30 (15)
Max Height Difference	Indoor Unit	m	15	15	25	25
	Outdoor Unit		-10 to 46	-10 to 46	-15 to 24	-10 to 46
Operation Range	Cooling	°CDB	-15 to 24	-15 to 24	-15 to 24	-15 to 24
	Heating	°CDB	-15 to 24	-15 to 24	-15 to 24	-15 to 24
Refrigerant			R32	R32	R32	R32

Due to ongoing research and development, specifications and designs are subject to improvement without notice; therefore relevant manuals must be consulted before any action is taken to install or service these products.

PRODUCT SPECIFICATIONS

LIFESTYLE HI-WALL RANGE: KMTC (CONTINUED)

Set Code	Indoor unit		SET-ASTG24KMTC	SET-ASTG30KMTC	SET-ASTG34KMTC	
	Model No.	Outdoor unit	ASTG24KMTC	ASTG30KMTC	ASTG34KMTC	
Power Source	Operation Type		Reverse Cycle		Reverse Cycle	
	V / Ph / Hz		240 / 1 / 50	240 / 1 / 50	240 / 1 / 50	240 / 1 / 50
Capacity	Cooling	KW	7.10 (1.10 - 8.20)	8.50 (2.90 - 10.50)	9.40 (2.90 - 11.20)	
	Heating	KW	8.00 (1.10 - 10.10)	9.00 (2.20 - 11.20)	10.30 (2.70 - 11.70)	
Input Power	Cooling (Max)	KW	2.46 (Max 3.15)	2.46 (Max 3.85)	2.78 (Max 4.03)	
	Heating (Max)	KW	1.91 (Max 3.00)	2.34 (Max 4.01)	2.84 (Max 4.24)	
EER	Cooling	KW / KW	3.41	3.45	3.58	
COP	Heating	KW / KW	4.19	3.84	3.63	
	Cooling		2.5	2.0	2.0	
Star Rating	Heating		4.0	3.0	2.5	
	Cooling		2.5	2	2	
AEEP	Heating	KW / KW	4	3	2.5	
	Cooling		8.9 / 8.3	10.4 / 10.1	11.7 / 11.9	
Running Current	Cooling / Heating	amps				
Moisture Removal	Cooling / Heating	l / hr	2.7	2.5	3.5	
Noise Level	Indoor Sound Pressure (High/Quiet)	dBA	49 / 29	51 / 33	52 / 34	
	Outdoor Sound Pressure Cooling / Heating	dBA	49 / 29	51 / 33	51 / 33	
Air Circulation (Indoor - High Fan)	Indoor Unit	dBA	54 / 52	50 / 54	50 / 54	
	Outdoor Unit		66	67	67	
Net Dimensions H x W x D	Indoor Unit	I / sec	325 / 325	389 / 389	389 / 389	
	Outdoor Unit		280 x 980 x 240	340 x 1150 x 280	340 x 1150 x 280	
Piping Connections (Liquid / Suction)	Indoor Unit	mm	12.5	18.5	18.5	
	Outdoor Unit		716 x 820 x 315	800 x 900 x 330	914 x 970 x 370	
Max Pipe Length (Precharged Length)	Indoor Unit	mm	06.35 / 012.70	09.52 / 015.88	09.52 / 015.88	
	Outdoor Unit	m	30 (15)	75 (20)	75 (30)	
Max Height Difference	Indoor Unit	m	25	30	30	
	Outdoor Unit		-10 to 46	-10 to 46	-10 to 46	
Operation Range	Cooling	°CDB	-15 to 24	-15 to 24	-15 to 24	
	Heating	°CDB	-15 to 24	-15 to 24	-15 to 24	
Refrigerant			R32	R32	R32	

Due to ongoing research and development, specifications and designs are subject to improvement without notice; therefore relevant manuals must be consulted before any action is taken to install or service these products.

PRODUCT SPECIFICATIONS

DESIGNER HI-WALL RANGE: KUCA

Set Code	SEF-ASTG09KUCA	SEF-ASTG12KUCA	SEF-ASTG18KUCA
Model No.	ASTG09KUCA	ASTG12KUCA	ASTG18KUCA
	AOTG09KUCA	AOTG12KUCA	AOTG18KUCA
Power Source	240 / 1 / 50	240 / 1 / 50	240 / 1 / 50
Capacity	KW	2.50 (0.90-3.60)	3.50 (0.90-4.10)
	KW	3.20 (0.90-5.40)	4.30 (0.90-5.70)
Input Power	KW	0.51 (0.25-1.14)	0.88 (0.25-1.88)
	KW	0.67 (0.25-1.60)	1.06 (0.25-1.70)
EER	KW / KW	4.90	3.98
COP	KW / KW	4.78	4.06
Star Rating	Cooling	5.0	3.5
	Heating	5.0	3.5
Running Current	amps	2.7 / 3.3	4.3 / 4.9
Moisture Removal	l / hr	1.3	1.8
	dBa	42 / 21	43 / 21
Noise Level	dBa	42 / 21	43 / 22
	dBa	47 / 47	49 / 49
Air Circulation (Indoor - High Fan)	l / sec	222	236
Net Dimensions H x W x D	mm	282 x 870 x 185	282 x 870 x 185
	kg	9.5	9.5
Piping Connections (Liquid / Suction)	mm	540 x 790 x 290	540 x 790 x 290
	kg	34	34
Max Pipe Length (Precharged Length)	m	20 (20)	20 (20)
Max Height Difference	m	15	15
Operation Range	°CDB	10 to 46	10 to 46
	°CDB	-15 to 24	-15 to 24
Refrigerant	R32	R32	R32

Due to ongoing research and development, specifications and designs are subject to improvement without notice, therefore relevant manuals must be consulted before any action is taken to install or service these products.

PRODUCT SPECIFICATIONS

CLASSIC HI-WALL RANGE: COMPACT HI-WALL PREMIER

Set Code	SEF-ASTG09LVCC	SEF-ASTG12LVCC	SEF-ASTG18LVCC	SEF-ASTG22LVCC
Model No.	ASTG09LVCC	ASTG12LVCC	ASTG18LVCC	ASTG22LVCC
	AOTG09LVCC	AOTG12LVCC	AOTG18LVCC	AOTG22LVCC
Power Source	240 / 1 / 50	240 / 1 / 50	240 / 1 / 50	240 / 1 / 50
Capacity	KW	2.50 (0.90-3.30)	3.50 (0.90-4.00)	5.00 (0.90-5.80)
	KW	3.40 (0.90-4.00)	4.80 (0.90-5.60)	6.00 (1.05-8.10)
Input Power	KW	0.58 (Max 1.24)	0.92 (Max 1.42)	1.53 (Max 2.03)
	KW	0.78 (Max 1.56)	1.11 (Max 2.00)	1.49 (Max 3.19)
EER	KW / KW	4.31	3.80	3.27
COP	KW / KW	4.66	4.32	4.03
Star Rating	Cooling	4.0	3.0	2.0
	Heating	4.5	4.0	3.5
Running Current	amps	2.8 / 3.5	4.2 / 5.0	6.5 / 6.3
Moisture Removal	l / hr	1.3	1.8	2.6
	dBa	41 / 21	42 / 21	46 / 29
Noise Level	dBa	42 / 22	43 / 22	46 / 30
	dBa	47 / 47	48 / 48	52 / 53
Air Circulation (Indoor - High Fan)	l / sec	219 / 225	225 / 239	267 / 267
Net Dimensions H x W x D	mm	283 x 790 x 225	283 x 790 x 225	283 x 790 x 225
	kg	9.5	9.5	10
Piping Connections (Liquid / Suction)	mm	540 x 660 x 290	540 x 790 x 290	620 x 790 x 290
	kg	25	34	40
Max Pipe Length (Precharged Length)	m	20 (15)	20 (15)	20 (15)
Max Height Difference	m	15	15	15
Operation Range	°CDB	10 to 46	10 to 46	10 to 46
	°CDB	-15 to 24	-15 to 24	-15 to 24
Refrigerant	R410A	R410A	R410A	R410A

Due to ongoing research and development, specifications and designs are subject to improvement without notice, therefore relevant manuals must be consulted before any action is taken to install or service these products.

PRODUCT SPECIFICATIONS

CLASSIC HI-WALL RANGE: HI-WALL PREMIER LARGE CAPACITY

Set Code	SEF4STG24LFC		SEF4STG30LFC		SEF4STG34LFC	
	Indoor unit	ASTG24LFC	ASTG30LFC	ASTG34LFC	Indoor unit	ASTG34LFC
Model No.	AOTG24LFC		AOTG30LFC		AOTG34LFC	
Power Source	240 / 1 / 50		240 / 1 / 50		240 / 1 / 50	
Capacity	Cooling	7.10 (0.90-8.30)	8.00 (2.90-9.00)	8.00 (2.90-9.00)	9.20 (2.90-10.00)	9.20 (0.90-5.00)
	Heating	8.00 (0.90-10.60)	9.00 (2.20-11.00)	9.00 (2.20-11.00)	10.00 (2.70-11.20)	4.20 (0.90-5.00)
Input Power	Cooling (Max)	2.17 (Max 2.86)	2.42 (Max 3.15)	2.42 (Max 3.15)	2.80 (Max 3.54)	1.25 (Max 2.13)
	Heating (Max)	2.26 (Max 4.06)	2.64 (Max 3.53)	2.64 (Max 3.53)	3.03 (Max 3.57)	1.47 (Max 2.49)
EER	Cooling	3.27	3.31	3.31	3.29	3.36
COP	Heating	3.54	3.41	3.41	3.30	3.67
	Cooling	2.0	2.0	2.0	2.0	2.0
Star Rating	Cooling	2.5	2.0	2.0	2.0	2.0
	Heating	9.1 / 9.5	10.2 / 11.1	10.2 / 11.1	11.8 / 12.8	2.5
Running Current	amps		amps		amps	
Moisture Removal	l / Hr		l / Hr		l / Hr	
	Cooling / Heating	2.7	3.2	3.2	3.5	2.1
Noise Level	Indoor Sound Pressure (High / Quiet)	Cooling	49 / 32	49 / 33	49 / 33	52 / 34
		Heating	48 / 32	49 / 33	49 / 33	52 / 34
Noise Level	Outdoor Sound Pressure Cooling / Heating	Cooling	55 / 56	53 / 55	53 / 55	50 / 50
		Heating	71	69	69	67
Air Circulation (Indoor - High Fan) Cooling / Heating	l / sec		l / sec		l / sec	
	Cooling / Heating	311 / 311	311 / 319	311 / 319	347 / 339	250 / 264
Net Dimensions (H x W x D)	mm		mm		mm	
	Indoor Unit	320 x 998 x 238	320 x 998 x 238	320 x 998 x 238	320 x 998 x 238	282 x 870 x 185
Net Dimensions (H x W x D)	kgs		kgs		kgs	
	Indoor Unit	14	14	14	14	9.5
Piping Connections (Liquid / Suction)	mm		mm		mm	
	Indoor Unit	620 x 790 x 290	830 x 900 x 330	830 x 900 x 330	1,290 x 900 x 330	540 x 790 x 290
Max Pipe Length (Precharged Length)	kgs		kgs		kgs	
	Indoor Unit	41	61	61	86	34
Max Height Difference	m		m		m	
	Indoor Unit	06.35 / Ø15.88	09.52 / Ø15.88	09.52 / Ø15.88	09.52 / Ø15.88	06.35 / Ø12.70
Operation Range	°CDB		°CDB		°CDB	
	Cooling	30 (15)	50 (20)	50 (20)	50 (20)	20 (15)
Operation Range	°CDB		°CDB		°CDB	
	Heating	-10 to 46	-10 to 46	-10 to 46	-5 to 46	15
Refrigerant	°CDB		°CDB		°CDB	
	Cooling	-15 to 24	-15 to 24	-15 to 24	-15 to 24	-15 to 24
Refrigerant		R410A	R410A	R410A	R410A	R410A

Due to ongoing research and development, specifications and designs are subject to improvement without notice therefore relevant manuals must be consulted before any action is taken to install or service these products.

PRODUCT SPECIFICATIONS

CLASSIC HI-WALL RANGE: COMPACT HI-WALL PREMIER PLUS

Set Code	SEF4STG4LUCB		SEF4STG4LUCB		
	Indoor unit	ASTG4LUCB	Indoor unit	ASTG4LUCB	
Model No.	AOTG4LUCB		AOTG4LUCB		
Power Source	240 / 1 / 50		240 / 1 / 50		
Capacity	Cooling	4.20 (0.90-5.00)	Cooling	4.20 (0.90-5.00)	
	Heating	5.40 (0.90-6.00)	Heating	5.40 (0.90-6.00)	
Input Power	Cooling (Max)	1.25 (Max 2.13)	Cooling (Max)	1.25 (Max 2.13)	
	Heating (Max)	1.47 (Max 2.49)	Heating (Max)	1.47 (Max 2.49)	
EER	Cooling	3.36	Cooling	3.36	
COP	Heating	3.67	Heating	3.67	
	Cooling	2.0	Cooling	2.0	
Star Rating	Cooling	2.0	Cooling	2.0	
	Heating	2.5	Heating	2.5	
Running Current	amps		amps		
Moisture Removal	l / Hr		l / Hr		
	Cooling / Heating	5.7 / 6.4	Cooling / Heating	5.7 / 6.4	
Noise Level	Indoor Sound Pressure (High / Quiet)	Cooling	45 / 25	Cooling	45 / 25
		Heating	45 / 27	Heating	45 / 27
Noise Level	Outdoor Sound Pressure Cooling / Heating	Cooling	50 / 50	Cooling	50 / 50
		Heating	67	Heating	67
Air Circulation (Indoor - High Fan) Cooling / Heating	l / sec		l / sec		
	Cooling / Heating	250 / 264	Cooling / Heating	250 / 264	
Net Dimensions (H x W x D)	mm		mm		
	Indoor Unit	282 x 870 x 185	Indoor Unit	282 x 870 x 185	
Net Dimensions (H x W x D)	kgs		kgs		
	Indoor Unit	9.5	Indoor Unit	9.5	
Piping Connections (Liquid / Suction)	mm		mm		
	Indoor Unit	540 x 790 x 290	Indoor Unit	540 x 790 x 290	
Max Pipe Length (Precharged Length)	kgs		kgs		
	Indoor Unit	34	Indoor Unit	34	
Max Height Difference	m		m		
	Indoor Unit	20 (15)	Indoor Unit	20 (15)	
Operation Range	°CDB		°CDB		
	Cooling	10 to 46	Cooling	10 to 46	
Operation Range	°CDB		°CDB		
	Heating	-15 to 24	Heating	-15 to 24	
Refrigerant		R410A	Refrigerant		
Refrigerant		R410A	Refrigerant		

Due to ongoing research and development, specifications and designs are subject to improvement without notice therefore relevant manuals must be consulted before any action is taken to install or service these products.

PRODUCT SPECIFICATIONS

COMPACT FLOOR CONSOLE

Set Code	Indoor unit	SEF-AGV09JAC	SEF-AGV14JAC
Model No.	Outdoor unit	AGV09JAC	AGV14JAC
	Operation Type	AOTV09JAC	AOTV14JAC
Power Supply	V / Ph / Hz	240 / 1 / 50	240 / 1 / 50
Capacity	Cooling	2.60 (0.90-3.50)	4.20 (0.90-5.00)
	Heating	3.50 (0.90-5.50)	5.20 (0.90-8.00)
Input Power	Cooling (Max)	0.60 (Max 1.40)	1.22 (Max 1.95)
	Heating (Max)	0.81 (Max 2.20)	1.44 (Max 3.05)
EER	KW / KW	4.33	3.44
COP	KW / KW	4.32	3.61
AEER	KW / KW	4.102	3.369
ACOP	KW / KW	4.341	3.352
Star Rating	Cooling	3.5	2
	Heating	3.5	2.5
Running Current	amps	2.8 / 3.8	5.3 / 6.1
Moisture Removal	l / hr	1.3	2.1
Indoor Sound Pressure (High / Quiet)	Cooling	40 / 22	44 / 22
	Heating	40 / 22	43 / 22
	Outdoor Sound Pressure (Cooling / Heating)	47 / 48	50 / 50
Outdoor Sound Power	dBa	64	66
Air Circulation (Indoor - High Fan) Cooling / Heating	l / sec	158 / 167	181 / 181
Net Dimensions HxWxD	Indoor Unit	600 x 740 x 200	600 x 740 x 200
	Outdoor Unit	540 x 790 x 290	540 x 790 x 300
Piping Connections (Liquid / Suction)	mm	Ø6.35 / Ø6.52	Ø6.35 / Ø12.70
Max Pipe Length (Precharged Length)	m	20 (15)	20 (15)
Max Height Difference	m	15	15
Operation Range	Cooling	-10 to 43	-10 to 43
	Heating	-15 to 24	-15 to 24
Refrigerant		R410A	R410A

Due to ongoing research and development, specifications and designs are subject to improvement without notice therefore relevant manuals must be consulted before any action is taken to install or service these products.

PRODUCT SPECIFICATIONS

DUAL CONSOLE

Set Code	Indoor unit	SEF-ABT618LVA	SEF-ABT624LVC
Model No.	Outdoor unit	ABT618LVA	ABT624LVC
	Operation Type	AOT618LVC	AOT624LVC
Power Supply	V / Ph / Hz	240 / 1 / 50	240 / 1 / 50
Capacity	Cooling	5.20 (0.90-5.90)	7.10 (2.90-8.00)
	Heating	6.00 (0.90-7.50)	8.00 (2.20-9.10)
Input Power	Cooling (Max)	1.51 (Max 1.82)	2.14 (Max 2.40)
	Heating (Max)	1.66 (Max 2.35)	2.21 (Max 2.65)
EER	KW / KW	3.44	3.32
COP	KW / KW	3.61	3.61
AEER	KW / KW	3.451	3.346
ACOP	KW / KW	3.621	3.392
Star Rating	Cooling	2	2
	Heating	2.5	2.5
Running Current	amps	6.4 / 7.0	9.0 / 9.3
Moisture Removal	l / hr	2.0	2.7
Indoor Sound Pressure (High / Quiet)	Cooling	44 / 32	49 / 36
	Heating	44 / 32	49 / 36
	Outdoor Sound Pressure (Cooling / Heating)	55 / 56	53 / 54
Outdoor Sound Power	dBa	71	68
Air Circulation (Indoor - High Fan) Cooling / Heating	l / sec	217 / 217	272 / 272
Net Dimensions HxWxD	Indoor Unit (Floor Application)	655 x 990 x 199	655 x 990 x 199
	Outdoor Unit	620 x 790 x 290	830 x 900 x 330
Piping Connections (Liquid / Suction)	mm	Ø6.35 / Ø12.70	Ø6.35 / Ø15.88
Max Pipe Length (Precharged Length)	m	30 (15)	30 (20)
Max Height Difference	m	20	30
Operation Range	Cooling	-10 to 46	-10 to 46
	Heating	-15 to 24	-15 to 24
Refrigerant		R410A	R410A

Due to ongoing research and development, specifications and designs are subject to improvement without notice therefore relevant manuals must be consulted before any action is taken to install or service these products.

PRODUCT SPECIFICATIONS

COMPACT CEILING CASSETTE

Set Code	Indoor Unit	SET-AUTG091VB	SET-AUTG121VB	SET-AUTG181VA	SET-AUTG241VC	
Model No.	Outdoor Unit	AUTG091VB AOTG091B0B	AUTG121VB AOTG121B0B	AUTG181VA AOTG181A0C	AUTG241VC AOTG241A0C	
Operation Type		Reverse Cycle		Reverse Cycle		
Power Source	V / Ph / Hz	240 / 1 / 50	240 / 1 / 50	240 / 1 / 50	240 / 1 / 50	
Capacity	Cooling	2.60 (0.90-3.60)	3.50 (0.90-4.00)	5.20 (0.90-5.90)	7.10 (2.90-8.00)	
	Heating	3.50 (0.90-4.48)	4.00 (0.90-4.83)	6.00 (0.90-7.50)	8.00 (2.20-9.10)	
Input Power	Cooling (Max)	0.60 (Max 1.92)	0.91 (Max 1.99)	1.56 (Max 1.99)	2.16 (Max 2.47)	
	Heating (Max)	0.83 (Max 2.28)	0.98 (Max 2.37)	1.66 (Max 2.52)	2.21 (Max 2.80)	
EER	KW / KW	4.33	3.85	3.33	3.29	
COP	KW / KW	4.22	4.08	3.61	3.61	
Star Rating	Cooling	3.5	2.5	2	2	
	Heating	3.5	3	2.5	2.5	
Running Current	amps	2.9 / 4.1	4.3 / 4.7	6.6 / 7.0	9.1 / 9.3	
Moisture Removal	l / hr	0.5	0.9	2.2	2.7	
	Indoor Sound Pressure (High / Quiet)	Cooling	33 / 28	37 / 28	38 / 26	49 / 30
Noise Level	Outdoor Sound Pressure	Heating	34 / 27	37 / 28	43 / 30	49 / 33
	Cooling / Heating	44 / 49	49 / 50	55 / 56	53 / 54	
Air Circulation (Indoor - High Fan)	Outdoor Sound Power	59	61	71	68	
	l / sec	150 / 150	169 / 167	189 / 222	258 / 258	
Net Dimensions (H x W x D)	Indoor Unit	mm	245 x 570 x 570	245 x 570 x 570	245 x 570 x 570	
	Cassette Grille	kg	15	15	16	
Piping Connections (Liquid / Suction)	Indoor Unit	mm	49 x 700 x 700	49 x 700 x 700	49 x 700 x 700	
	Outdoor Unit	kg	2.6	2.6	2.6	
Max Pipe Length (Precharged Length)	mm	620 x 790 x 290	620 x 790 x 290	620 x 790 x 290	830 x 900 x 330	
	kg	39	39	41	60	
Max Height Difference	°CDB	06.35 / 09.52	06.35 / 09.52	06.35 / 012.70	06.35 / 015.88	
	m	20 (15)	20 (15)	30 (15)	30 (20)	
Operation Range	Cooling	15	15	20	30	
	Heating	-10 to 46	-10 to 46	-10 to 46	-10 to 46	
Refrigerant	Refrigerant	-15 to 24	-15 to 24	-15 to 24	-15 to 24	
		R410A	R410A	R410A	R410A	

Due to ongoing research and development, specifications and designs are subject to improvement without notice therefore relevant manuals must be consulted before any action is taken to install or service these products.

FUJITSU

NEW ZEALAND'S FAVOURITE AIR®

PRODUCT SPECIFICATIONS

SPECIFICATIONS

Products in this brochure contain R410A and R32 refrigerant. Please refer to specifications before installing and servicing this product. Only persons and/or companies qualified and experienced in the installation, service and repair of refrigerant products should be permitted to do so. The purchaser must ensure that the person and/or company who is to install, service or repair this Heat Pump/Air Conditioner has qualifications and experience in refrigerant products. Suitable access for warranty and service is required. Future improvements, specifications, designs of product and availability are subject to change without notice. Please check with your Dealer.

ALL CAPACITY AND ENERGY EFFICIENCY RATINGS ARE BASED ON AS / NZS3823.2.

COOLING	Indoor temperature Outdoor temperature	27°C DB / 19°C WB 35°C DB
HEATING	Indoor temperature Outdoor temperature	20°C DB 7°C DB / 6°C WB

Running current is at rated conditions (AS3823) and does not include compressor start-up or variations in power supply and load conditions.





Like all Kiwis, I put the comfort of my family first.

Installing a Fujitsu will keep you comfortable all year round and ensure you wake up & arrive home to a fresher more comfortable home.

Our Heat Pumps/Air Conditioners are efficient, effective and beautifully designed. You can trust Fujitsu. It's New Zealand's Favourite Air®.

”

Ben Fleming



FUJITSU GENERAL NEW ZEALAND
A SUBSIDIARY OF FUJITSU GENERAL LIMITED

fujitsugeneral.co.nz

WHY FUJITSU?



Fujitsu is recommended by Asthma New Zealand



Fujitsu's Catechin Filters are approved by the Asthma and Respiratory Foundation NZ's Sensitive Choice® programme.

Fujitsu General accepts no liability for incorrect data. Please ensure you have confirmed installation requirements and pipe sizes prior to install.